



Telescopic Pole with a square base and rounded corners, made of S-235 JR galvanized steel with a standard micro-textured black finish. The shaft is made of tropical hardwood treated with a fungicide, insecticide, and water-repellent finish. Internally reinforced with 60mm galvanized steel square tubing.

Total Pole height: 3.8 meters, with a Ø60 mm top termination, or 6 meters, with Side panel in black micro-textured galvanized steel. Design with a rustic aesthetic and classic format, which adds warmth and highlights areas of historical heritage and natural environments.

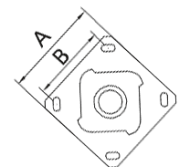
Optional:


– Anti-urine treatment at the base.

\* Installation note: For correct orientation of the ,

Set the bolts in concrete at a 45° angle to the street direction

*\* Installation note: For correct orientation of the , set the bolts in concrete at a 45° angle to the street direction.*



Ref.	H	H1	H2	Ø	A	B	
ICFU38A	3800	1210	3570	60	300	200	M18x500
ICFU601A	6000	1210	5770	60	300	200	M18x500



ILDAL



ALS