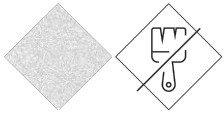




UM370

Bench

Toledo



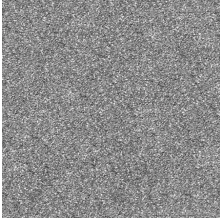
White
concrete

Low
maintenance



Bench TOLEDO 2000, total dimensions (length x height x depth) 2000 x 425 x 450 mm, made of granite-white precast concrete. It rests on a prepared surface under its own weight.

Concrete: Reinforced concrete with a pickled and water-repellent finish. Manufactured with cement, sand, and gravel embedded within a metal structure. Shot blasting results in a high-quality, durable texture.



Gray



Ref.	A	B	H	H1
UM370	2000	450	425	-
UM370RC	2000	560	845	450

Toledo
UM370RC



+49 (0) 521 450 131-2 | mb@bas-mobilier.de

