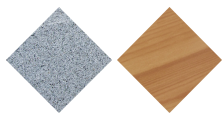
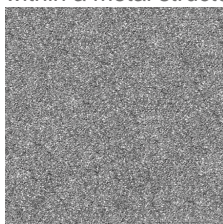


# Kube Plus

Precast  
ConcreteHard  
wood

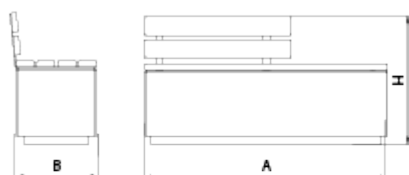
**KUBE PLUS 2000 designer Bench**, total dimensions (length x height x depth) of 2000x110x35mm for the seat and 1200x110x35mm for the backrest, made of rough-looking granite-grey prefabricated concrete and bench made of tropical wood planks (treated with a triple-layer Lignus coating, a fungicidal, insecticidal and water-repellent protector) in a natural finish. It can be placed in single elements or in groups. Supported on a prepared surface, by its own weight.

**Concrete:** Reinforced concrete with a pickled and water-repellent finish. Manufactured with cement, sand, and gravel embedded within a metal structure. Shot blasting results in a high-quality, durable texture.



Gray

**Hardwood treated with LIGNUS:** Wood from responsible forestry. Density greater than 930kg/m<sup>3</sup>, at 12% humidity, treated with a triple-layer LIGNUS coating, fungicide, insecticide, and water-repellent that provides protection against moisture penetration. Final finish with a layer of natural pigment in a satin finish, which provides additional protection against UV rays, the main cause of deterioration in this type of material.



Ref.	A	B	B1	H
UM372LP	2000	500	-	775
UM372SLP	500	500	-	775
UM372LPL	2000	500	-	490

**Kube Luz Plus**  
UM372LPL

**Silla Kube P**  
UM372SLP


We offer the possibility to customize the product through personalized marking to enhance your corporate image:

- 74 x 35 mm aluminum plate with screen printing.
- Board machined by milling.

